

# 23" Sweet Pea/Sleepy Head Daddy's Boy *by Dianna Effner*

## 23" Sweet Pea/Sleepy Head Daddy's Boy Body Pattern and Assembling Instructions

### MATERIALS LIST

#### Cloth Body

1/2 yd. of 45" wide heavy weight muslin  
3" X 3" piece of cardboard (lightweight)  
1" x 1 1/2" piece black fabric (behind mouth)  
Dental floss (or 20 gauge copper wire)  
Acrylic baby beans for stuffing body  
Thread to match  
Polyester fiber-fil  
Fray Check  
Hand sewing needle  
Large funnel  
Blunt darning needle 2"  
Bear Joints (45 mm: arms) (65mm: legs)  
Needle nose pliers  
Water soluble marker or pencil  
Craft glue such as Velvelette  
General sewing supplies

#### Eyes & Wigs

Use 20mm - 22mm eyes  
Use 14-16" wigs

**Wigs & Eyes Available at Expressions**  
**800 452-2480**

### GENERAL INFORMATION

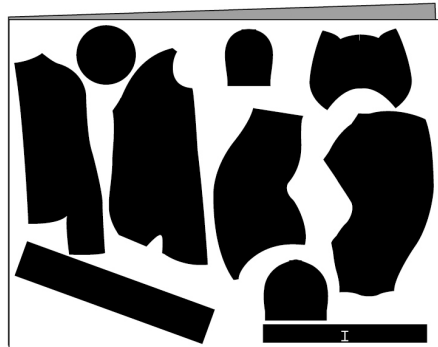
*Please read through the instructions  
carefully before beginning.*

Cut pattern carefully on bold line being sure to cut out all pieces. Mark darts and pattern "dots" on wrong side of fabric unless otherwise indicated. All seam allowances are 1/4" unless otherwise stated. If you wish to save the original pattern, use vellum or tracing paper for pattern pieces.

Cut out all pattern pieces. You will have:

2 body front  
2 body back  
2 outer leg  
2 inner leg  
2 feet  
2 outer shoulder caps  
2 inner shoulder caps  
2 leg gussets  
1 neck band  
2 leg bands (for porcelain legs)

Suggested Pattern Layout



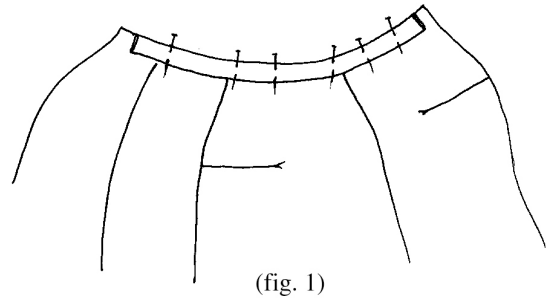
\*The dolls body will be constructed from the bottom up, starting with the legs.

## Body Construction

### Torso

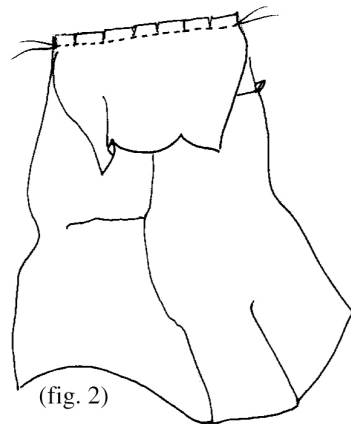
Sew all darts on front and back torso.

Sew front torso pieces together, right sides together, at center front seam. Stitch center back seam. Beginning at neck edge on one side of torso stitch back to front, right sides together, part way down one side to dot. Stay stitch neck opening. Then clip curve to stitching. Fold and press neck band casing in half lengthwise. Turn raw edge under 1/4". Pin neckband to right side of torso matching raw edges, beginning and ending at 1/4" seam allowance. (see fig. 1) Stitch band to neck opening. Turn casing up with raw edges down. Pin back to front at side seams. Stitch around torso beginning at dot and ending at neck edge. Turn right side out to assemble.



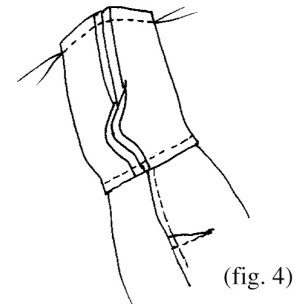
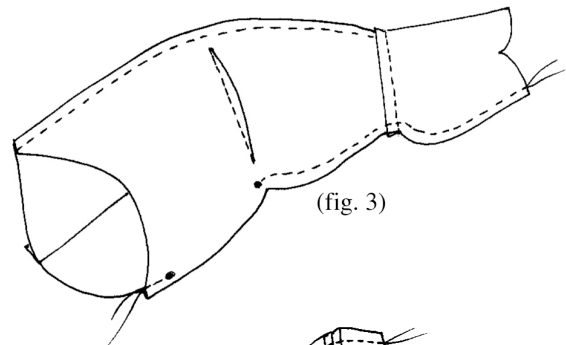
### Cloth Legs

Mark darts on inner and outer leg pieces making sure to account for 1 right and 1 left leg. Stitch darts on all four pieces. Match leg front seams. Pin easing curves. Stitch. Stay stitch along edge of foot piece 1/4" as shown on pattern piece. Clip to stitching. Pin foot to leg, right sides together. Stitch, easing curve. (see fig. 2) Pin back of leg seam, right sides together, easing curves. Stitch seam from top of leg to toe leaving opening between dots. (see fig. 3) Fold toe flat with seam open flat at center of foot. Stitch across toe. (see fig. 5) Pin round leg cap piece, right sides together, to leg opening, easing to fit. Stitch. Turn right side out to assemble.



### Arms (cloth shoulder cap)

Stitch dart on outer shoulder cap pieces. Press dart flat. Pin outer to inner piece placing right sides together. Stitch seam from straight edge to dot. Open and press seam. Turn straight edge up on fold line wrong sides together press and stitch casing 1/8" from raw edge. Thread dental floss (copper wire or chord) through the casing using a large needle. Inserting needle just inside seam allowance at dot and with drawing needle just inside seam allowance at opposite end of casing. (see fig. 5) Match curved edge and pin, right sides together. Stitch inner and outer shoulder cap pieces together continuing at dot to folded edge. Taking care not to catch dental floss in stitching. Turn right side out to assemble.

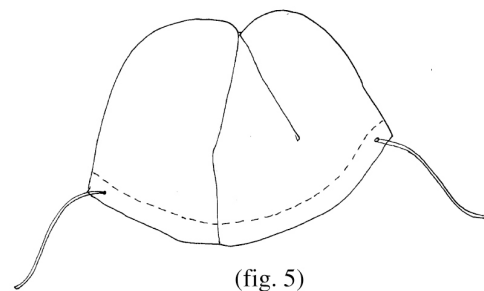


### Body Assembly

Make small hole at joint marking, put a small amount of fray check to keep it from unraveling. Insert 45 mm male joint through hole from inside of arm. Fill arm cap with poly stuffing. Apply glue to groove on arm - Insert porcelain arm into arm opening. Position groove of porcelain piece so that floss lays in. Tie off floss, cut off excess.

### Attaching Cloth Legs

Locate joint markings on inside of thigh, make a small hole at each joint marking. (fray check) Insert male part of doll joint into leg. Fill legs tightly with poly fiber fill. Blind stitch opening by hand. Locate joint markings on body, make small hole at each marking (fray check). Insert male part of joint into hole. Inside body position female joint (plain washer) over



male part as shown in fig. 6. Push lock washer on joint firmly (fig. 8). Make sure your placement is correct - the washer is very difficult to remove.

#### Attaching Porcelain Legs

Cut 2 legbands on bias. Fold in half lengthwise. Pin to gusset, beginning and ending 1/4" from each short end, gusset to leg band. Clip curves. Insert wire. Overlap ends to conceal wire, hand stitch close. With male joint inserted through center of leg cap fasten to leg by tightening wire in groove. (fig. 7) Attach leg to body just as with cloth legs.

#### Attaching Arms

Fill body cavity 3/4 full of baby pellets. Make small hole on body at joint markings. Insert arms in same manner as legs. Firmly stuff remainder of body with poly fiberfil, this will prevent the dolls head from getting floppy.

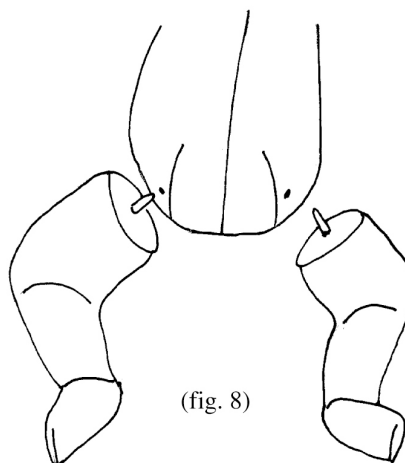
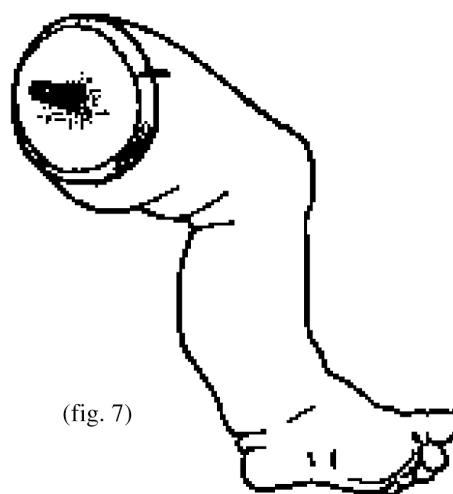
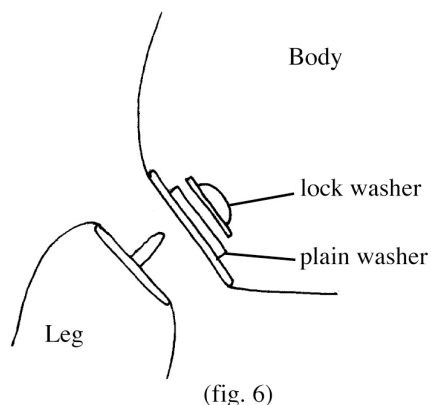
#### Head Preparation

Use 1" x 1 1/2" black fabric to glue behind mouth opening. We recommend stuffing the head with poly fiber fil.

Trace around head opening onto lightweight cardboard - trim to fit. Spread a thin bead of craft glue on rim of porcelain piece. Attach cardboard covering and allow to dry thoroughly.

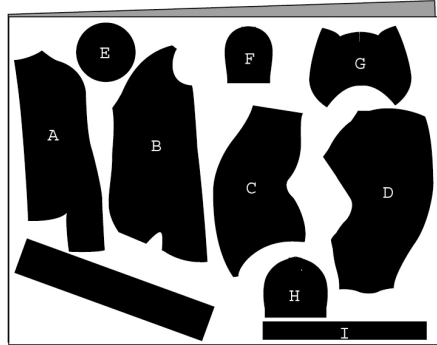
#### Attaching Head

Gently ease neck ridge of porcelain head into neck opening. Slip neck band over ridge, pull wire tightly and twist to secure. Cut wire leaving 1/2" tail. Bend tail snugly against neck.



# Sweet Pea/Sleepy Head/Daddy's Boy Body Pattern Revisions

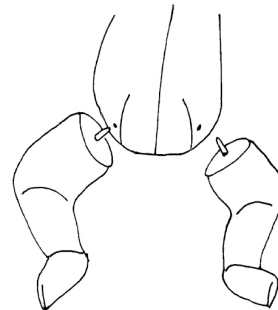
Sleepy Head (porcelain leg) leg band should be cut on the bias.



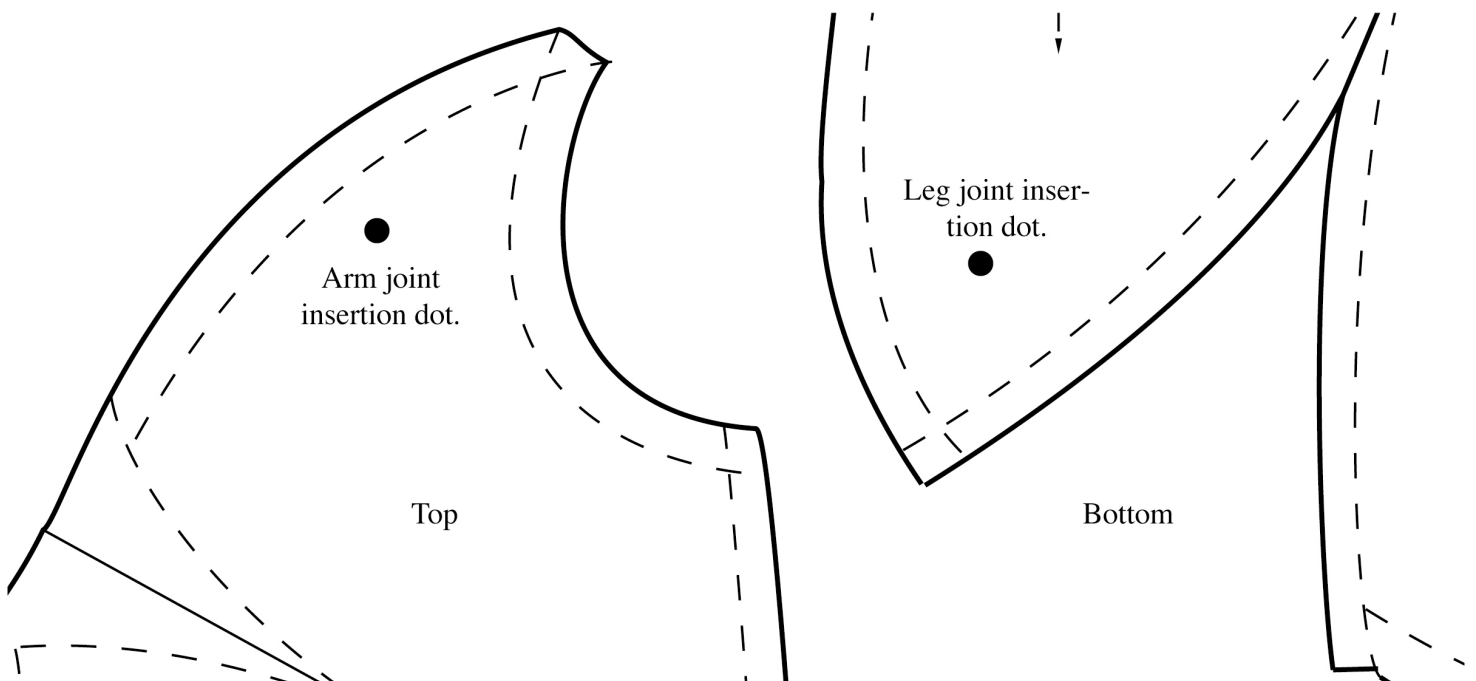
**Instructions Should Read:**  
**Figure #8 Should look like this:**

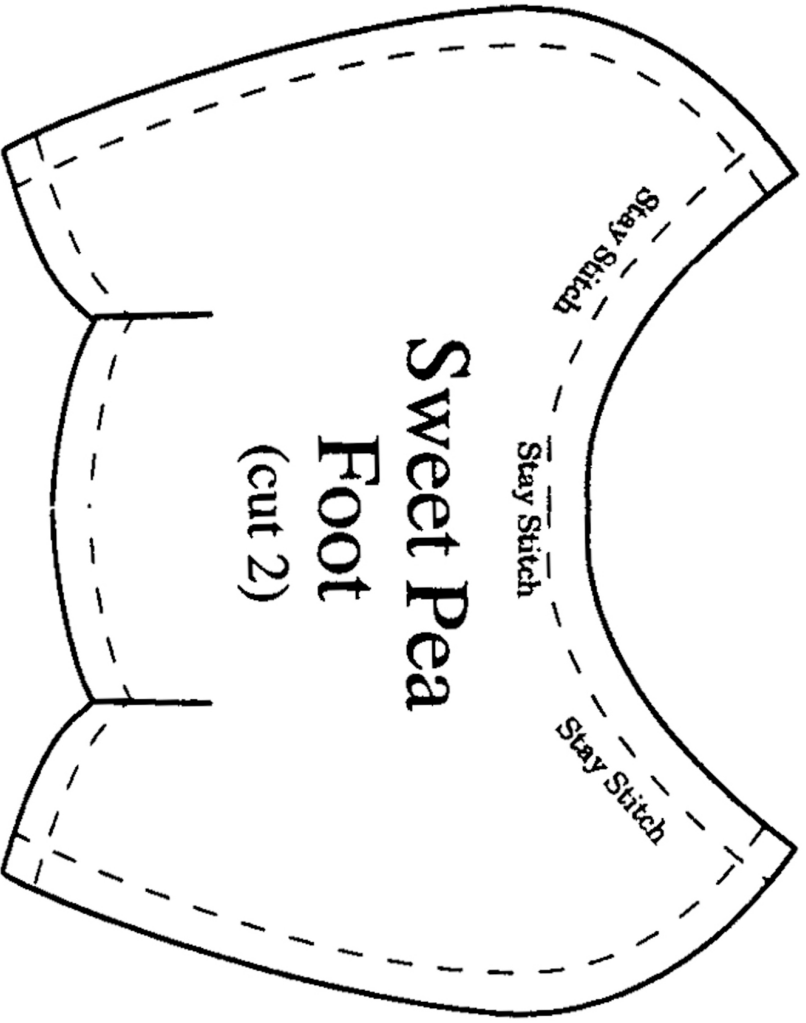
### Attaching Porcelain Legs

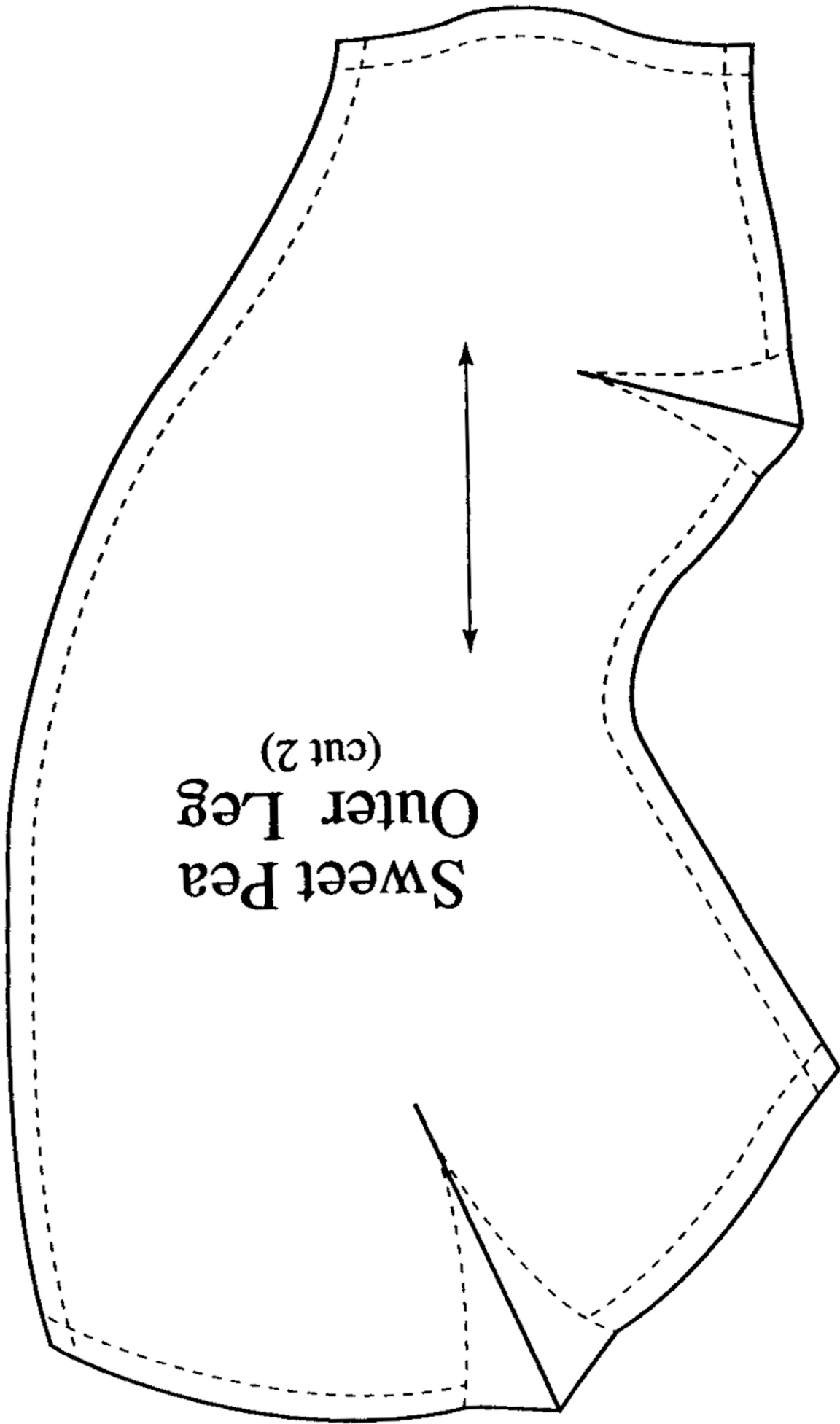
Cut 2 legbands on bias. Fold in half lengthwise.  
Pin to gusset, beginning and ending 1/4" from each short end, gusset to leg band. Clip curves. Insert wire. Overlap ends to conceal wire, hand stitch close. With male joint inserted through center of leg cap fasten to leg by tightening wire in groove. (fig. 7) Attach leg to body just as with cloth legs.



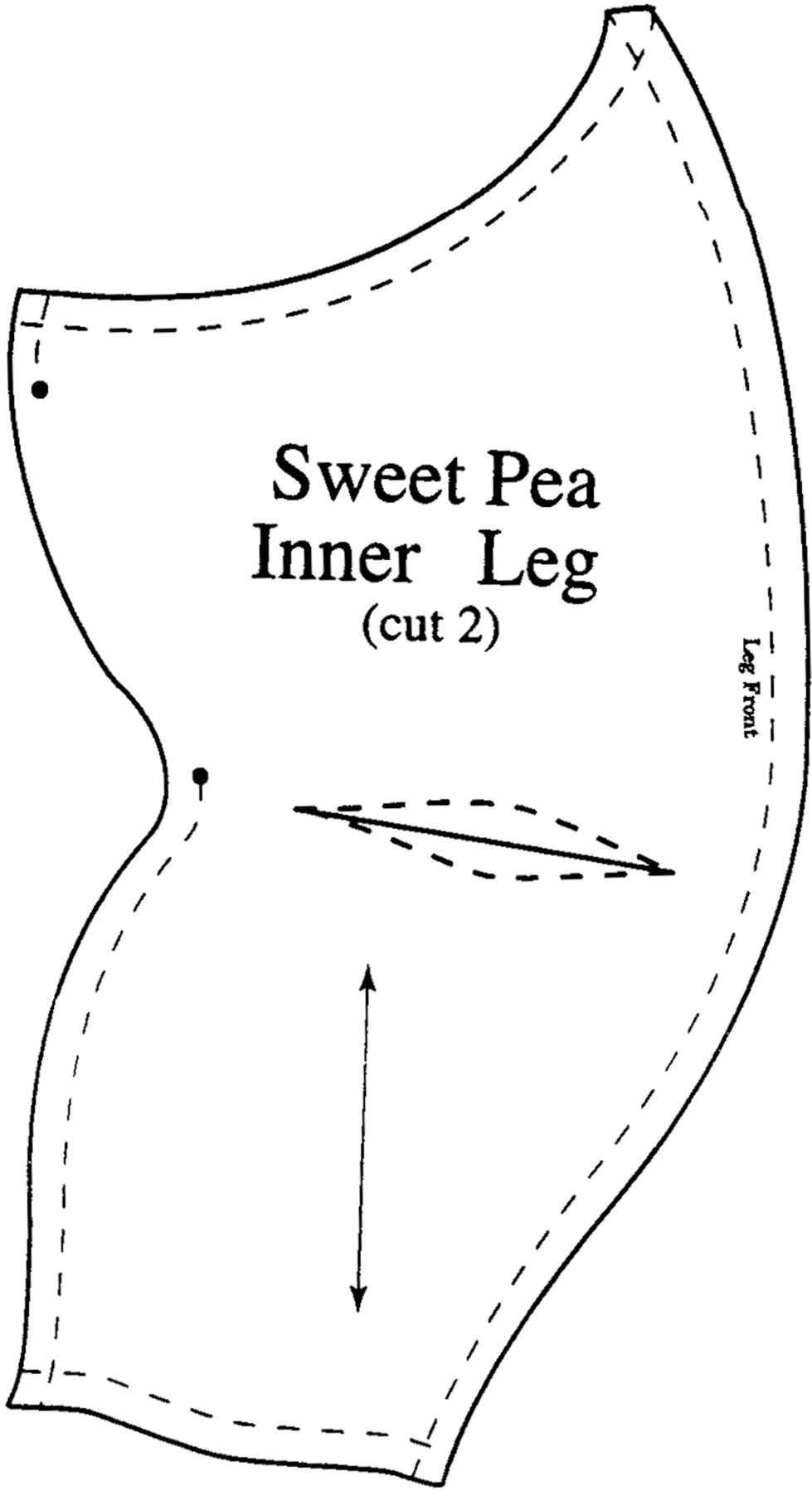
### Sweet Pea/Sleepy Head Front Torso





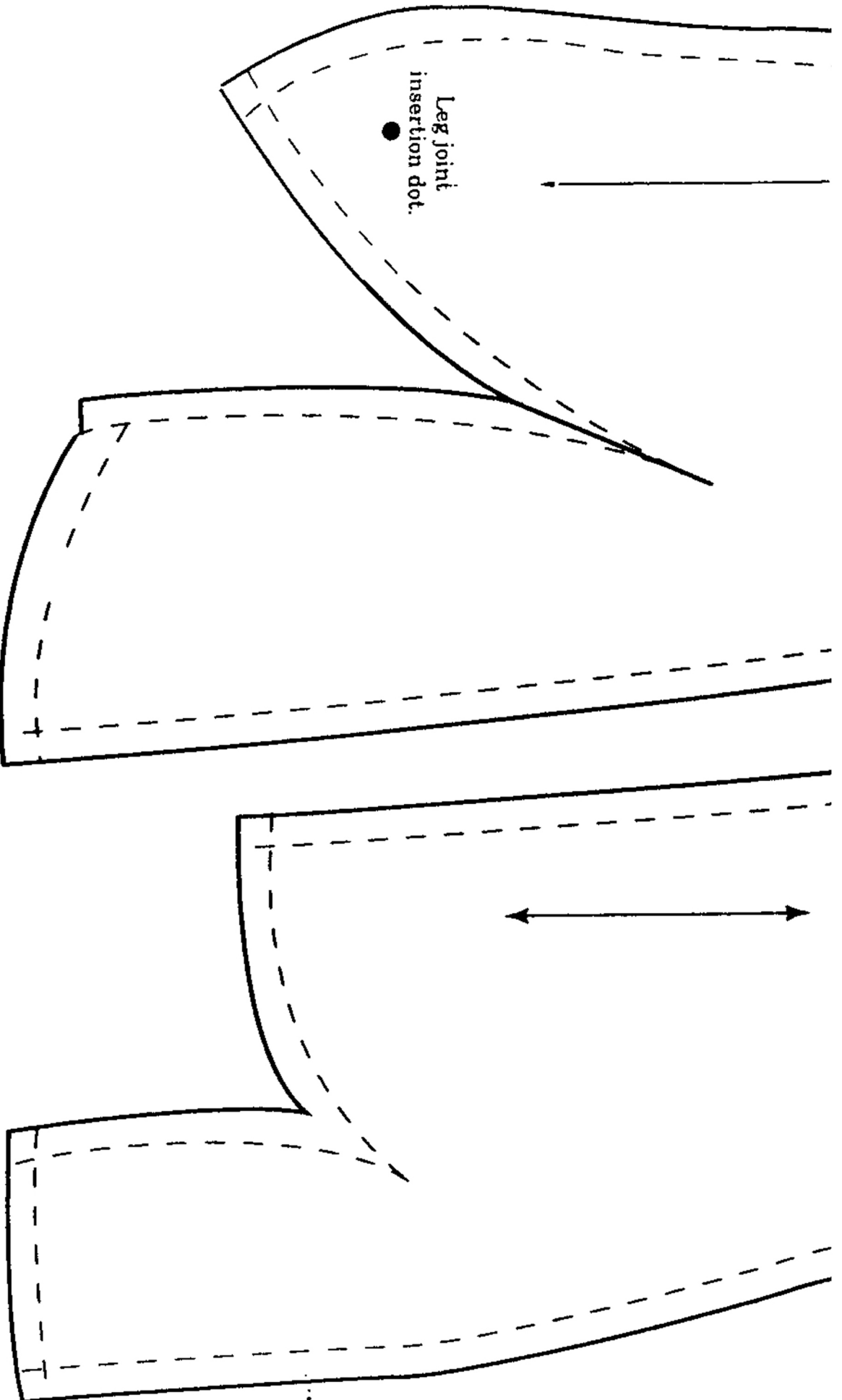
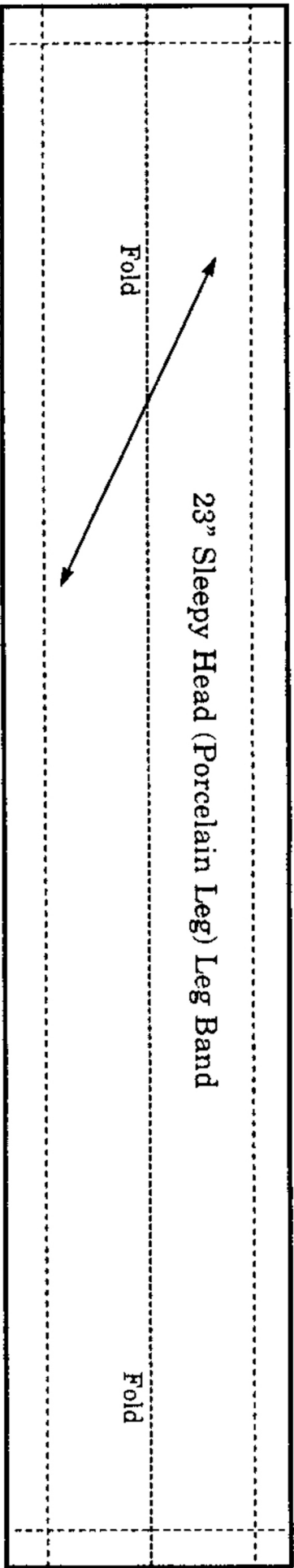


Sweet Pea  
Outer Leg  
(cut 2)

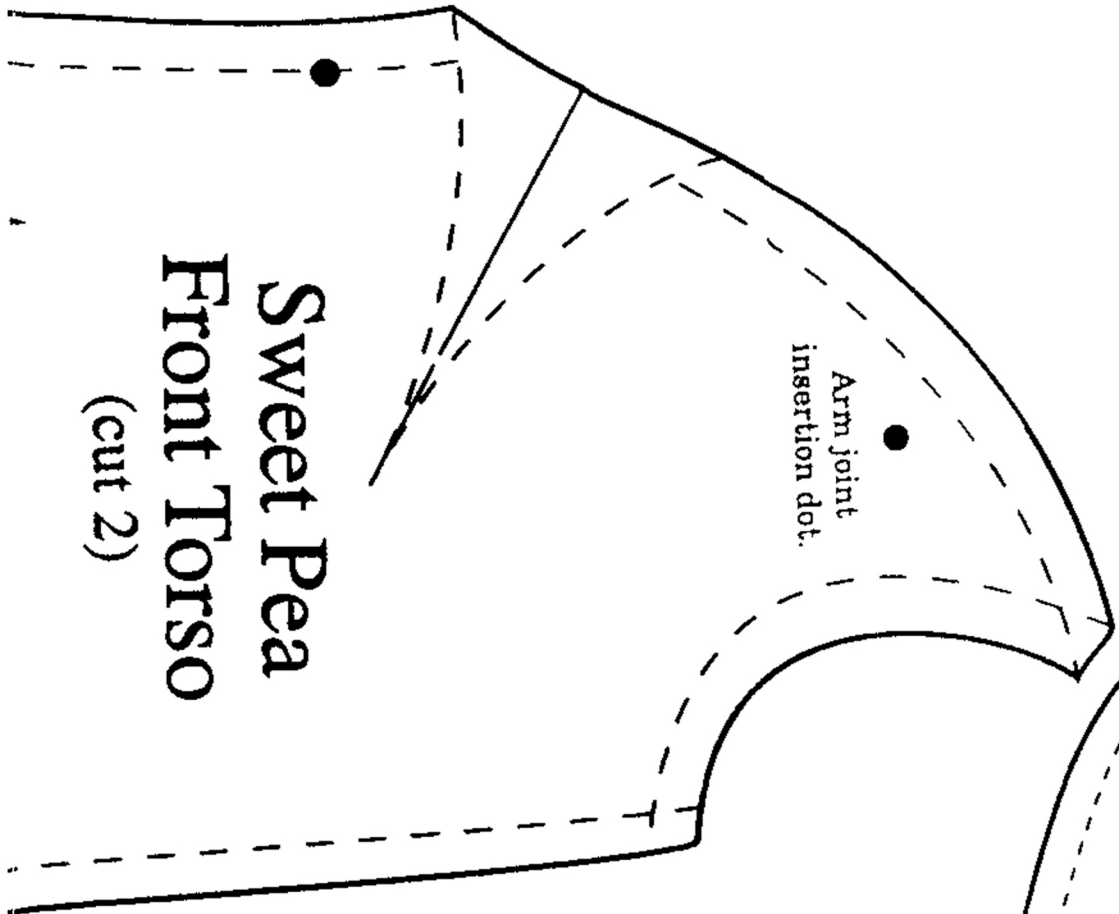


Sweet Pea  
Inner Leg  
(cut 2)

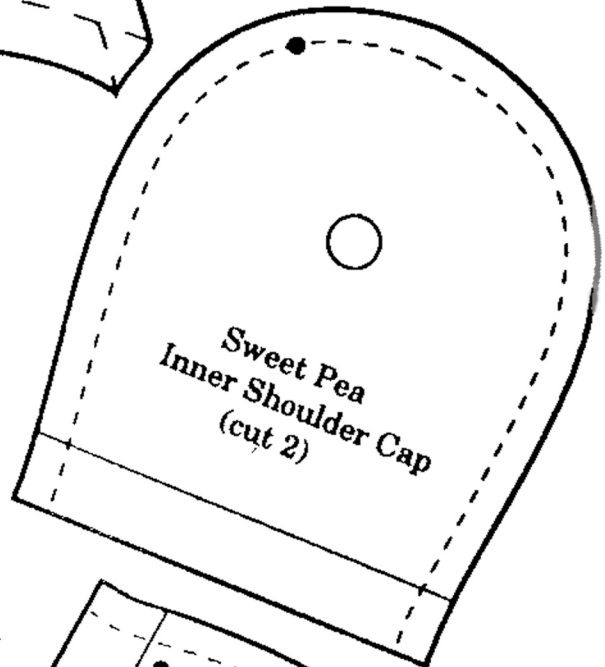
Leg Front



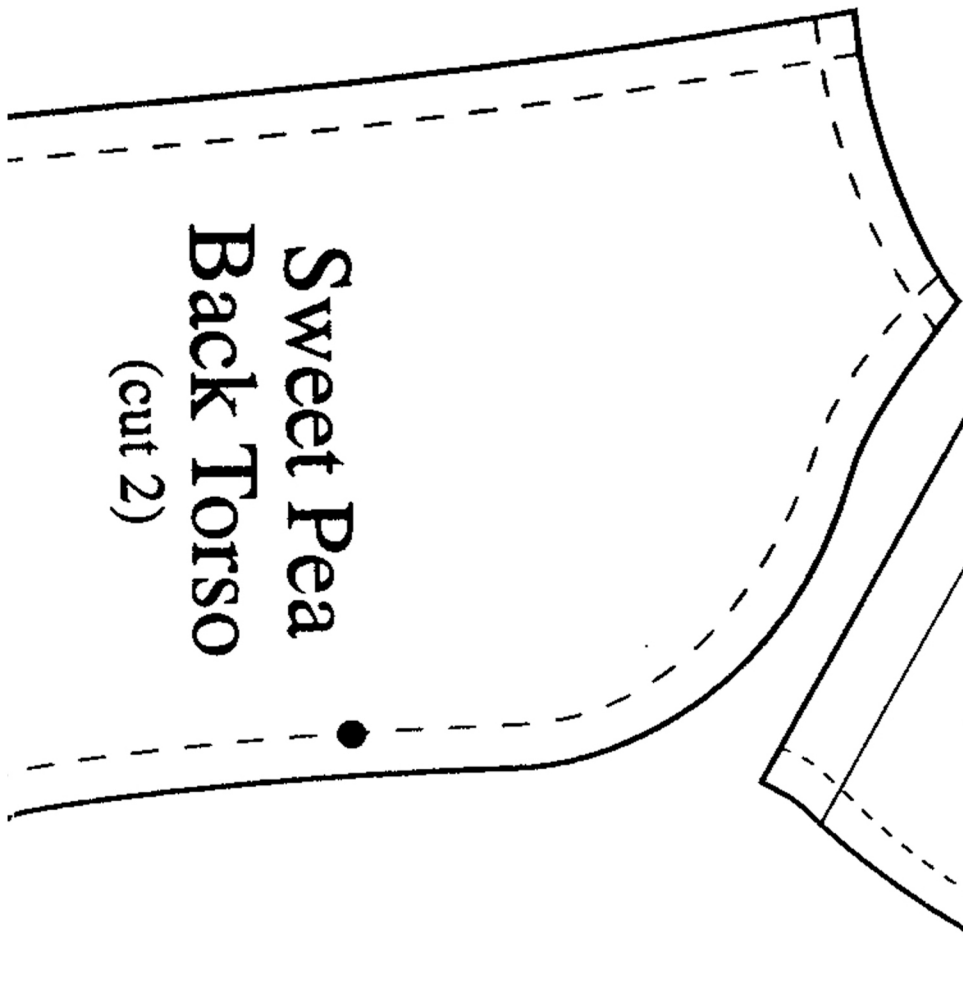




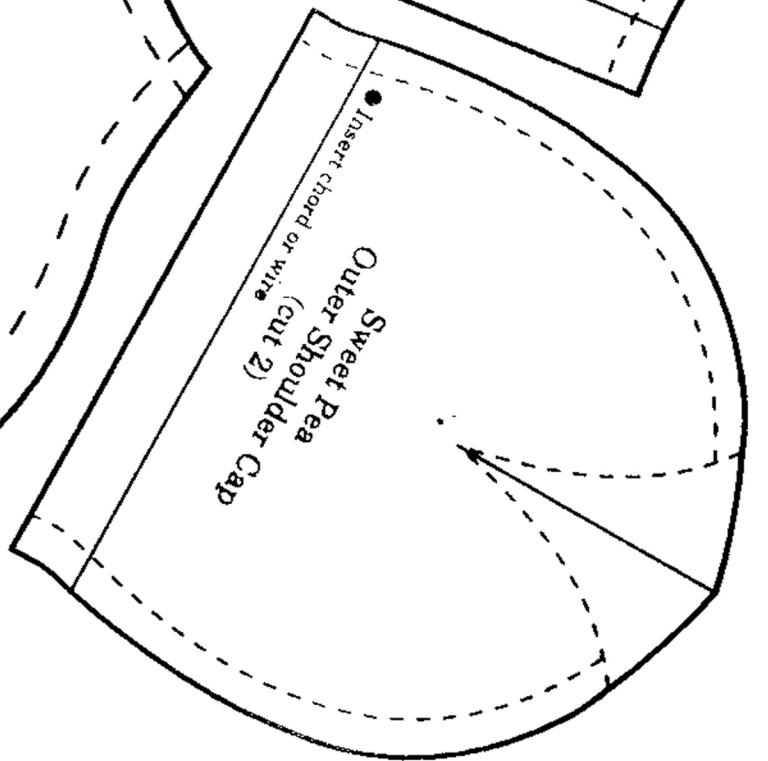
**Sweet Pea  
Front Torso  
(cut 2)**



**Sweet Pea  
Inner Shoulder Cap  
(cut 2)**



**Sweet Pea  
Back Torso  
(cut 2)**



**Sweet Pea  
Outer Shoulder Cap  
(cut 2)**



PO BOX 174 JAMESTOWN, MISSOURI 65046

March 25, 2002

(660) 849-2114 fax (660) 849-2358

# Infant Painting Instructions

by Dianna Effner

---

## **Sweet Pea/Daddy's Boy/Sleepy Head/Angela/Colin/Punkin/Sweet Dreams/Bright Eyes/SweetThing/ - Painting Instructions**

### **MATERIALS LIST**

French Bisque  
by Seeleys  
silk sponge  
rubber scrubber  
scalpel  
CDW Medium  
China paints: Old Masters Red, Matte White, Pink,  
Hair Brown, Best Black, Blue Black, Air Blue, Light Blonde  
"Hair" Brush (available from Expressions)  
Expressions Brush Kit [Deerfoot Stippler, 10/0 fine liner,  
#1 round, China Mop (optional)]  
mineral oil  
paper towel  
soft cloth  
make-up wedges  
china paint eraser by Bell Ceramics or  
Star Type Cleaner by Faber Castell (found in office supply stores)  
Eye sizers 24mm 23" doll, 20mm 19" doll  
*Eyes, Wigs, Patterns, Brushes, Eyelites (12 color paint kits), and other accessories Available from Expressions® @800 452-2480*

### **GENERAL INFORMATION**

#### **Preparing the Greenware**

Pour legs, arms, head and shoulder plate in Misty Cream from Bell Ceramics or use porcelain slip of your choice. When the pieces are firm enough to remove from the mold, use a scalpel to trim away unwanted clay. Carefully cut away mouth opening. If you plan to fit the doll with set in eyes, carefully cut away the appropriate portion of the eyes, at this time. Allow to dry slowly away from drafts until completely dry. If you are planning to use set-in eyes, once porcelain is dry, carefully size the eye openings by first using a scalpel to remove excess clay inside of the eyelids. Finish rounding inside of eye opening with a 24mm (23" doll), 20mm (19" doll) eye sizer.

Remove parting lines and so on, with the cleaning method of your choice.

Fire porcelain to cone 6. Scrub with a rubber scrubber until satiny smooth. Wash and allow to dry.

### ALL OVER BLUSH (FIRST FIRING)

Using the painting Medium of your choice, give pieces an all over blush coat of Old Masters Red. Use mineral oil or medium of your choice to mix with pigment and to coat porcelain. Add extra blush where desired, on hands, feet, knees and elbows. With a 10/0 fine liner, paint a very thin line of Old Masters Red (diluted slightly with Medium) between fingers and toes. Stipple to soften and blend out with a deerfoot stippler. Stipple a small dot of blush color on dimples, finger nails and toe nails. With Matte White in your 10/0 fine liner, paint a stripe at the tip of each finger nail as shown in figure 1. Apply blush to face, neck and ears, stopping color at the hair line. Soften and blend this edge with a soft cloth or brush. If you are planning painted eyes, clean blush coat away from eye balls with a clean brush. Finish removing paint from the eyes with a small piece of paint eraser or type cleaner. (This stuff is handy to have whenever you wish to remove paint from the porcelain as you can shape it to a sharp point.) Paint the eyeball area with some Matte White using a #1 or #2 round paint brush. Stipple carefully to smooth out brush strokes. Fire all pieces to cone 019.



(Fig. 1)

### Lips

Wipe blush from lips and paint an even under coat of matte white taking care to stay within the proper outline. Soften edges with a stippler. (see fig. 6)

### SECOND FIRING

#### *Eyebrows and lashes*

With a 10/0 fine liner brush tipped with Hair Brown paint, draw a line in the crease along the upper eyelids. Soften and blend with a Deerfoot Stippler (fig.2). Draw a line beneath the edge of the upper eyelids. With tip of the 10/0 fine liner tipped with Hair Brown, pull short wispy eyelash strokes as in figure 3. Rub a trace of medium where eyebrows will be painted. Paint a soft shadowy eyebrow shape by painting light strokes in Hair Brown slightly diluted with Medium with a #1 round paint brush. Obscure and blend them together by pouncing with a Deerfoot Stippler (fig. 2). Over this brow shadow, use a 10/0 fine liner tipped with Hair Brown to draw some wispy fine eyebrow hairs. Mix a little Blonde Hair with a bit of Matte White and paint some light blonde hairs along upper edge of brows.



(Fig. 2)



(Fig. 3)

### Lips

Apply light coat of new soft pink to highlight area of lips as in figure 7.

### Hair

Prepare Blonde semi matte color by mixing with a small amount of matte white. Apply a light application of medium of your choice over area to be painted. Note the pattern and direction the hair lays on the head. Begin at the back of head at the "spiral". Use a 3/4" "Hair" brush. Apply paint following the direction of hair sculpted on head. Reload brush and apply paint until area indicated by hair markings is filled. Paint hairline with wispy strokes using the tips of the brush bristles. (see fig. 4 & 5)



(Fig. 4)

**NOTE:** If you are planning to paint the eyes, please read the section on eye painting and follow the procedure for the 1st Step. Be careful not to smudge your eyebrows and lashes while painting the eyes. After you have completed painting the eyes, fire the head to cone 016. The higher firing temperature will give depth and luster to the eye colors. **Do not fire eye colors and blush in the same firing. Wait until eyes are completed before doing blush firing.** Higher firing temperatures will fire off reds or can turn them brown.

### EYEBROWS AND LASHES (THIRD FIRING)

Add more Hair Brown to the crease and upper lash line. Stipple as in first firing. Mix a small amount of Best Black with some Rich Brown in your palette. Use this color on your 10/0 liner to darken and define crease lash line and upper lashes. Make darker lash strokes a little shorter than the lighter ones from the previous firing. *Refer to illustrations and photo as you work.*

#### Hair

Use a "Hair" brush following the direction of the hair indicated by sculpted lines. Prepare Hair brown semi matte paint and have ready on tile or palette. Apply a thin coat of medium over area of hair. Flow the paint on the head beginning at the "spiral" at the back of the head. Allow more color to build up at the back of the neck and around the "spiral". Use lighter strokes as you approach hairline around the face. Mix matte white with light blonde semi matte color and with the tips of the brush bristles lightly brush highlights along front hairline. Also highlight the area of the head halfway between the spiral and the hairline.(see fig. 4 & 5)



(Fig. 5)

If your are going to paint the eyes, proceed to step 2 of painting eye section otherwise fire before painting cheeks and lips.

### BLUSH FIRING

#### Cheek Blush

Use the Medium of your choice and Old Masters Red to blush the cheeks. A china mop or make-up sponge works well for this procedure. **Note:** Two light applications of blush yields a smoother result than one heavier application.

#### Ears

With #1 round brush apply some blush color "Old Masters Red" in recessed areas of the ears. Blend, shade, and soften with a deer foot stippler.

#### Lips

With your 10/0 fine liner loaded with old Masters Red, draw a fine line along the crease where the upper and lower lip meet. Soften this line with a stippler. With a #1 round brush, dilute some paint with a little Medium on your palette and apply medium soft tint of color to certain accent places on the lips, such as the curved peaks of the upper lips, in creases and near the corners of the lower lips. Stipple to soften (fig. 8). Fire to cone 019.

### SECOND BLUSH FIRING

#### Cheek Blush

Apply second application of blush to cheeks.

#### Lips

Add more color to lip parting line with a 10/0 liner loaded with Old Masters Red. Stipple or feather with a Deerfoot Stippler to soften the line. Apply a very light wash of Old Masters Red diluted with Medium over entire area of the mouth (fig. 8). Tint the inner corner of the eye with a touch of diluted Old Masters Red. Fire to cone 019.

### PAINTING THE EYES

Plan to do several firings to develop the depth of color you desire. It's much better to apply paint lightly in three or four thin layers, than to pile it up in one or two firings.

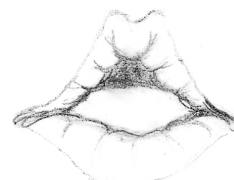


(Fig. 6)



highlight area

(Fig. 7)



(Fig. 8)

## Painting Sweet Pea's Eyes

Note: For the eyes especially, I recommend our china paint colors, Water Silks media and synthetic sable brushes. Our colors can be used with an oil based medium if you prefer, but natural sable bristles work best with oil colors.

Follow the instructions for painting the eye lashes and eyebrows.

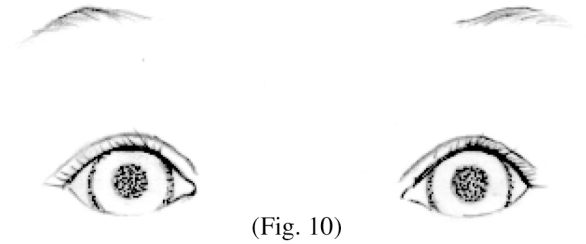
**Step 1 (Second Firing):** Use a 10/0 fine line brush loaded with Blue Black to carefully outline the pupil of the eye referring to the illustrations to help determine the precise position. Outline the iris visualizing a concentric circle around the same central point as the pupil. Continue to refer to the illustrations noting the shape of the white spaces and how much of the outer rim of the iris is hidden by the upper and lower lids. While shaping the rim of the iris, deposit a line about 1/16th inch wide of Blue Black. With a #1 syn-sable round brush, fill in the iris with a wash of Air Blue eye color (fig. 10). Clean out fine line brush by swishing in water and blotting on paper towel. Using fine liner, pull tiny strokes of color from the Blue Black rim toward the center of the eye through the Air blue. Turn the head as you go to facilitate even strokes. Pull some strokes from the edge of the pupil radiating from the center out toward the rim of the iris. (fig. 11). Fire to cone 016.

**Step 2 (Third Firing):** Add more Blue Black china paint to the rim of the iris with a 10/0 fine liner. Fill in the entire iris and pupil with a wash of Air blue applied with a #1 round paint brush. The light shade is used under the darker color of the iris to add flux to the area so that when the head is fired to cone 016, the eye will develop a shine. Without the light shade as an undercoat, the Black will tend to go somewhat flat after firing. Outline the pupil with Blue Black.

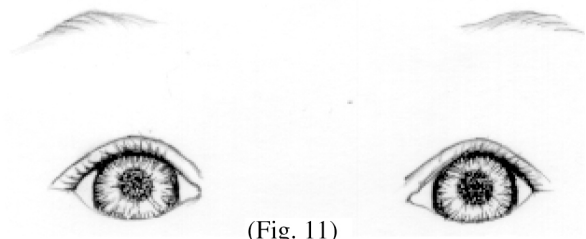
Repeat the 1st firing procedure on the eyes blending the dark into the light shade with fine strokes, pulling the outside color toward the middle and vice-versa. Leave the lighter area mostly Air blue. Finally, apply Best Black over the pupil area with a # 1 round brush, making sure the pupils are well centered within the iris rim, very round and the same size. Rotating the head to view the eye from all directions can be very helpful. Fire to cone 016.

**Step 3 (Fourth Firing):** One more firing might be enough to achieve the depth of color you desire. You might just need to deepen and smooth out the rim of the iris and give the pupil another coat of Best Black. Use more of the Air Blue with blending strokes, as in the first 2 firings, if you think it desirable. Apply a shadow line under the upper lid with Blue Black and feather it out with the tip of a small brush dipped in water then blotted (fig. 12). Fire to cone 016.

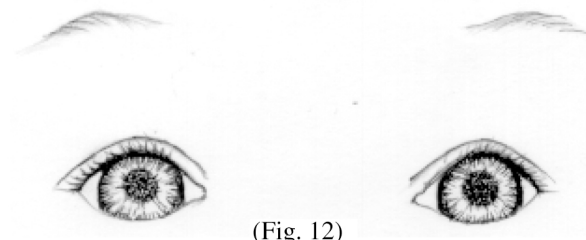
After final firing of the eye colors, proceed to painting instructions for blush firing.



(Fig. 10)



(Fig. 11)



(Fig. 12)

## Angela, Colin & Punkin Painting Illustrations

Follow all instructions found in the main painting instructions with the exception of the lips:

### Lips 1st Firing

Paint a light wash of Pink diluted with medium over entire lip area.

### Lips 2nd Firing

With a fine detail brush apply New Masters Red to lip creases. With Old Masters Red, add accent strokes lightly at the peaks of the upper lip, at outer corners and along lower edge of lower lip in contour shading strokes. Blend stroke very lightly with the tip of a clean Cats Tongue. Fire to cone 018

*Refer to main painting instructions for written directions.*



Second Firing - Eyebrows & Lashes - Angela



Third Firing - Eyebrows & Lashes - Angela



Second Firing - Eyebrows & Lashes - Colin



Third Firing - Eyebrows & Lashes - Colin



Second Firing - Eyebrows & Lashes - Punkin



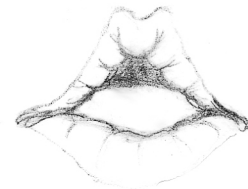
Third Firing - Eyebrows & Lashes - Punkin



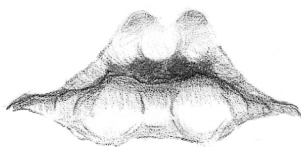
Second Firing  
Lips - Angela



Second Firing  
Lips - Colin



Second Firing  
Lips - Punkin



Third Firing  
Lips - Angela



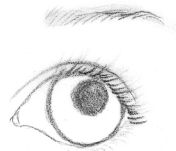
Third Firing  
Lips - Colin



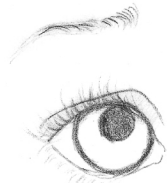
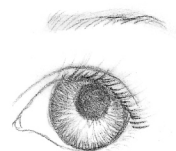
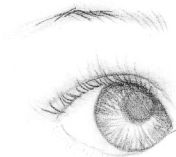
Third Firing  
Lips - Punkin



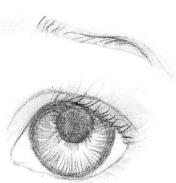
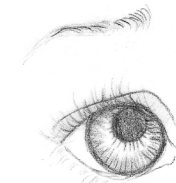
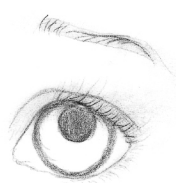
Step 1 (Second Firing) - Eyes - Angela



Step 2 (Third Firing) - Eyes - Angela



Step 1 (Second Firing) - Eyes - Colin



Step 2 (Third Firing) - Eyes - Colin



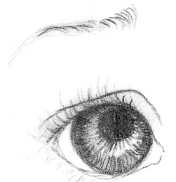
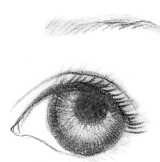
Step 1 (Second Firing) - Eyes - Punkin



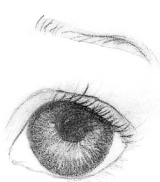
Step 2 (Third Firing) - Eyes - Punkin



Step 3 (Fourth Firing) - Eyes - Angela



Step 3 (Fourth Firing) - Eyes - Colin



Step 3 (Fourth Firing) - Eyes - Punkin

